

## RESEARCH ARTICLE

# Summer-Wet Hydrologic Cycle during the Middle Miocene of the United States: New Evidence from Fossil Fungi

Jennifer M. K. O’Keefe<sup>1\*</sup>, Matthew J. Pound<sup>2\*</sup>, Ingrid C. Romero<sup>1,3</sup>, Noelia B. Nuñez Otaño<sup>4,5</sup>, Martha E. Gibson<sup>6</sup>, Jessica McCoy<sup>2</sup>, Margaret E. Alden<sup>1</sup>, C. Jolene Fairchild<sup>1</sup>, Julia Fitzpatrick<sup>7</sup>, Emily Hodgson<sup>2</sup>, Taylor Horsfall<sup>8</sup>, Savannah Jones<sup>8</sup>, June E. Lennex-Stone<sup>1</sup>, Christopher A. Marsh<sup>1</sup>, Alyssa A. Patel<sup>8</sup>, Tyler M. Spears<sup>1</sup>, Laikin Tarlton<sup>7</sup>, Liberty F. Smallwood<sup>7</sup>, O. L. VanderEspt<sup>9</sup>, Jeremyah R. Cabrera<sup>8</sup>, Cortland F. Eble<sup>10</sup>, William C. Rember<sup>11</sup>, James E. Starnes<sup>12</sup>, Mac H. Alford<sup>13</sup>, Alyson Brink<sup>13</sup>, and Sophie Warny<sup>14</sup>

<sup>1</sup>Department of Engineering Sciences, Morehead State University, Morehead, KY, USA. <sup>2</sup>Department of Geography and Environmental Sciences, Northumbria University, Newcastle upon Tyne, UK. <sup>3</sup>Department of Paleobiology, National Museum of Natural History, Smithsonian Institution, Washington, DC, USA. <sup>4</sup>Laboratorio de Geología de Llanuras (CICYTTP– FCyT), CICYTTP (CONICET-Prov. ER–UADER), Diamante, Entre Ríos, Argentina. <sup>5</sup>CONICET (National Scientific and Technical Research Council), Buenos Aires, Argentina. <sup>6</sup>PetroStrat, Conwy, Wales, UK. <sup>7</sup>Department of Biology and Chemistry, Morehead State University, Morehead, KY, USA. <sup>8</sup>Craft Academy for Excellence in Science and Mathematics, Morehead State University, Morehead, KY, USA. <sup>9</sup>Department of Agricultural Science, Morehead State University, Morehead, KY, USA. <sup>10</sup>Kentucky Geological Survey, Lexington, KY, USA. <sup>11</sup>Independent Researcher, Fernwood, ID, USA. <sup>12</sup>Mississippi Department of Environmental Quality, Office of Geology, Jackson, MS, USA. <sup>13</sup>School of Biological, Environmental, and Earth Sciences, University of Southern Mississippi, Hattiesburg, MS, USA. <sup>14</sup>Center for Excellence in Palynology, Department of Geology & Geophysics, and Museum of Natural Science, Louisiana State University, Baton Rouge, LA, USA.

\*Address correspondence to: [jokeefe@moreheadstate.edu](mailto:jokeefe@moreheadstate.edu) (J.M.K.O.); [matthew.pound@northumbria.ac.uk](mailto:matthew.pound@northumbria.ac.uk) (M.J.P.)

Hydrologic reconstructions from North America are largely unknown for the Middle Miocene. Examination of fungal palynomorph assemblages coupled with traditional plant-based palynology permits delineation of local, as opposed to regional, climate signals and provides a baseline for study of ancient fungus. Here, the Fungi in a Warmer World project presents paleoecology and paleoclimatology of 351 fungal morphotypes from 3 sites in the United States: the Clarkia Konservat-Lagerstätte site (Idaho), the Alum Bluff site (Florida), and the Bouie River site (Mississippi). Of these, 83 fungi are identified as extant taxa and 41 are newly reported from the Miocene. Combining new plant-based paleoclimatic reconstructions with fungus-based paleoclimate reconstructions, we demonstrate cooling and hydrologic changes from the Miocene climate optimum to the Serravallian. In the southeastern United States, this is comparable to that reconstructed with pollen and paleobotany alone. In the northwestern United States, cooling is greater than indicated by other reconstructions and hydrology shifts seasonally, from no dry season to a dry summer season. Our results demonstrate the utility of fossil fungi as paleoecologic and paleoclimatic proxies and that warmer than modern geological time intervals do not match the “wet gets wetter, dry gets drier” paradigm. Instead, both plants and fungi show an invigorated hydrological cycle across mid-latitude North America.

## Introduction

The Miocene climate optimum [MCO; 16.9 to 14.7 million years ago (MA)], a period of warmer-than-present climates globally,

provides a proxy for likely future warming [1]. While global temperatures of the MCO are well established [1,2], the hydrological cycle is still poorly understood. In North America, recent fossil plant-based reconstructions suggested that rainfall patterns were

**Citation:** O’Keefe JMK, Pound MJ, Romero IC, Nuñez Otaño NB, Gibson ME, McCoy J, Alden ME, Fairchild CJ, Fitzpatrick J, Hodgson E, et al. Summer-Wet Hydrologic Cycle during the Middle Miocene of the United States: New Evidence from Fossil Fungi. *Research* 2024;7:Article 0481. <https://doi.org/10.34133/research.0481>

Submitted 12 June 2024  
Revised 4 September 2024  
Accepted 4 September 2024  
Published 24 September 2024

Copyright © 2024 Jennifer M. K. O’Keefe et al. Exclusive licensee Science and Technology Review Publishing House. No claim to original U.S. Government Works. Distributed under a Creative Commons Attribution License 4.0 (CC BY 4.0).

more seasonal than modern [3]. Here, we use a recently developed fossil fungi paleoclimate proxy to reconstruct Köppen-Geiger climate classifications [4] and use it to qualitatively test this “more seasonal than modern” hypothesis.

Both extant fungal biogeography and previous works examining fossil fungal assemblages have shown that they are sensitive to ambient climate [4–6].

Using fungal remains preserved during and following the MCO across a latitudinal gradient to reconstruct climate provides a fossil plant-independent perspective on past hydrological conditions.

Alum Bluff (Florida) and the Bouie River (Mississippi) site, located in the southeastern part of the United States, provide a record from 16 to 11.6 MA [3], encompassing part of the MCO (Alum Bluff), and the interval of time after the global cooling of the Middle Miocene climatic transition (MMCT) at Bouie River (Fig. 1; Supplementary Materials, SI1). The Clarkia Konservat-Lagerstätte (northern Idaho), located in the northwestern part of the country, provides a well-constrained record from the MCO (Fig. 1; Supplementary Materials, SI1). Trapper Creek (southern Idaho) provides a paleobotanical record of Serravallian climate for the northwest but was not part of the fungal study (Fig. 1). Existing paleobotanical and palynological records for these sites [7–12] suggest that a mosaic of plant communities inhabited the temperate to tropical Alum Bluff, subtropical to temperate Bouie River, warm-temperate Clarkia sites, and cool-conifer forests of Trapper Creek [13]. These 4 sites create a latitudinal and temporal perspective on North American paleoclimates during this warmer-than-present world.

Fossil fungal remains have been previously documented from all sites and have been the subject of minor studies at both Alum Bluff and Clarkia. Jarzen et al. [7] identified fungi present at Alum Bluff using fossil names, which have little correlation with modern taxonomic names and thus could not, as such, contribute ecological or climatological information about the fungi present. Most fungal taxa described from Clarkia to date utilize modern names; however, the focus has been primarily on epiphyllous fungi, which are not frequently encountered in palynological preparations from this site [8,14–16]. This is the first study to systematically extract, identify, and interpret fossil fungi preserved in sediments from Clarkia, Alum Bluff, and the Bouie River site (Fig. 1) in the full context of their modern counterparts. Where possible, fossil taxa were identified using modern names, which facilitates their use for paleoclimate reconstructions. These

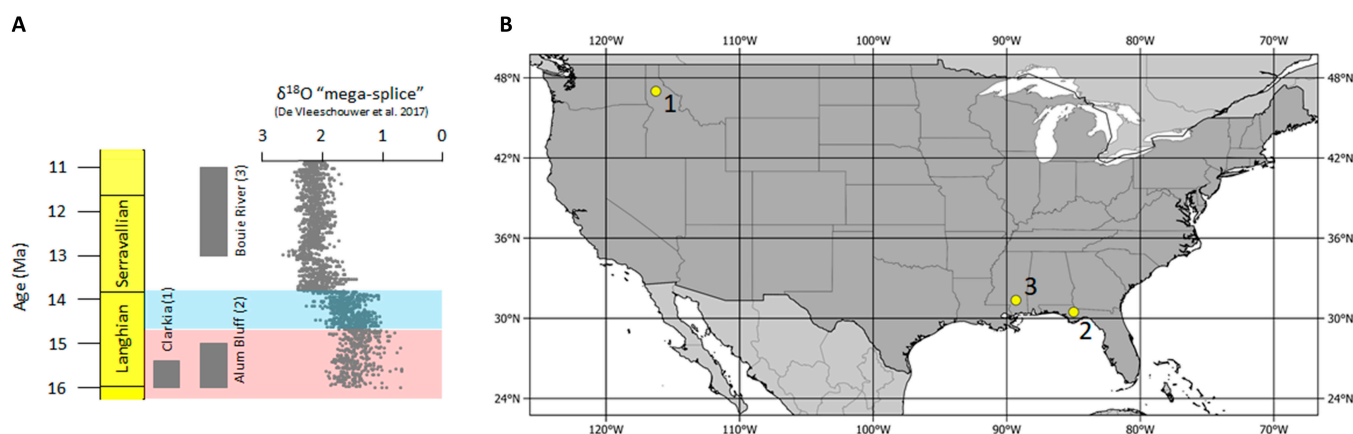
fungal-based reconstructions were then compared to new quantitative paleobotanical reconstructions to better elucidate both local and regional climate signals at each locality.

## Results

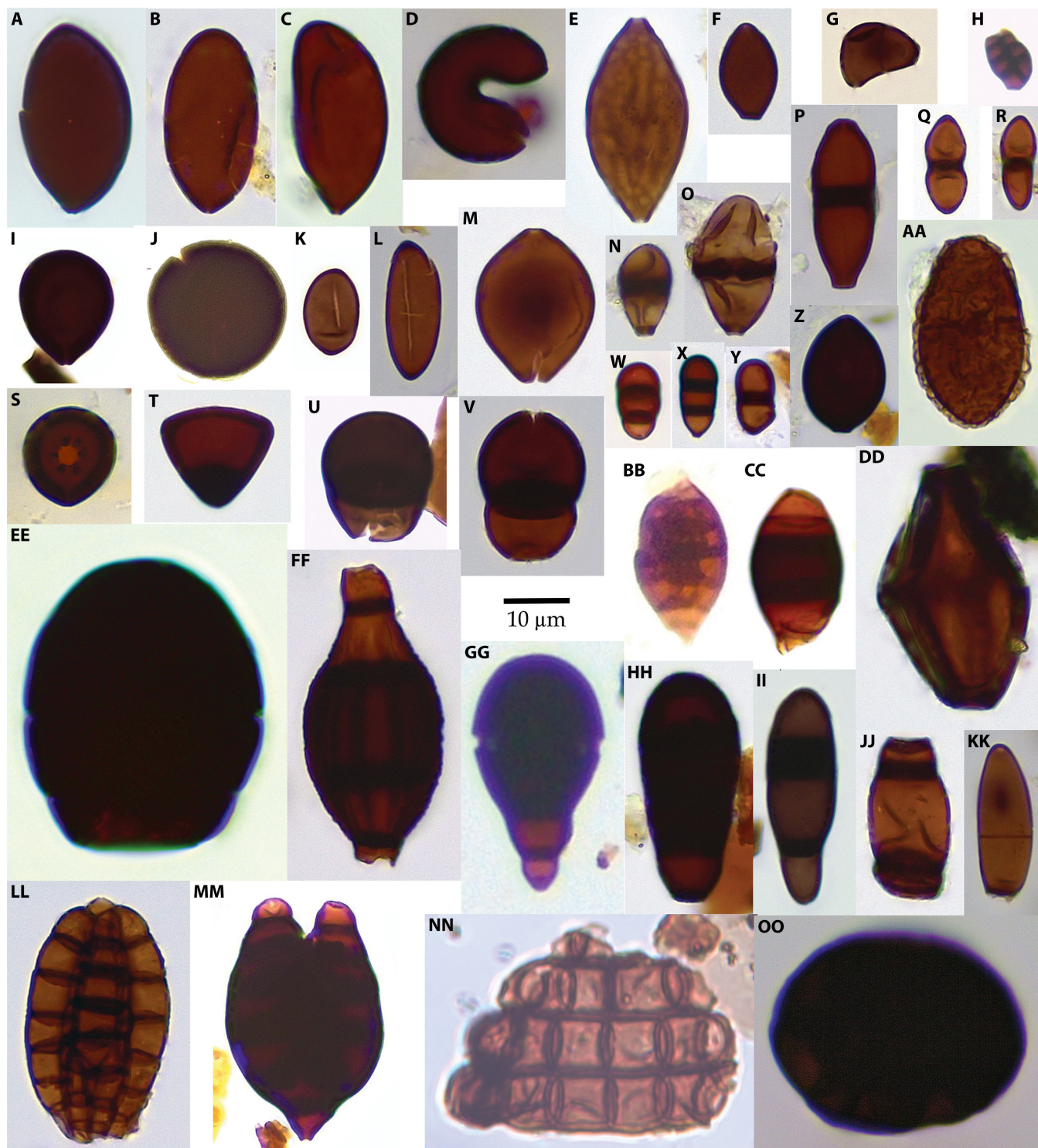
A total of 351 fungal morphotypes were obtained from the 3 sites (Supplementary Materials, SI2). Eighty-three of the morphotypes have been identified as modern taxa. Of these, 41 genera have not previously been noted in the Miocene: cf. *Acarocybiopsis*, *Bispora*, *Bombardioidea*, *Brachydesmiella*, cf. *Desertella*, *Dictyocheirospora*, *Didymosphaeria*, cf. *Helensiella*, *Hughesinia*, *Massaria*, *Melanographium*, cf. *Neorousoella*, *Pendulispora*, cf. *Polytretophora*, and *Seychellomyces* are unique to the Clarkia Lagerstätte; cf. *Alsidium*, *Atrorotquata* aff. *lineata*, cf. *Cladosporium*, *Gliomastix* aff. *fusigera*, cf. *Kionocephala*, *Puccinia*-type, *Sporidesmium*, *Thecaphora*, and cf. *Trimmatostroma* are unique to Alum Bluff; cf. *Bahugada*, *Caryospora*, *Heteroconium*, cf. *Melanospora*, *Septonema*, *Spegazzinia*  $\beta$ -type, and cf. *Termitariopsis* are unique to the Bouie River site; *Brachysporium*, cf. *Endophragmiopsis*, *Melanocephala*, cf. *Naviculispora*, and *Trichocladium* occur in both the Bouie River site and the Clarkia Konservat-Lagerstätte; *Hermatomyces*, *Minutisphaera*, and *Sphaerodes* occur in both Alum Bluff and the Clarkia Konservat-Lagerstätte; and *Chaetomium* and *Spadicoides* occur in all 3 sites. Samples from Clarkia (Fig. 2) generally contained the most diverse fungal assemblages, with up to 37 morphotypes present in any sample. The lowest fungal diversity occurred near the bases of ash deposits, especially in ash RA-3. Samples from Alum Bluff (Fig. 3) generally contained low-diversity fungal assemblages, with an average of 4 taxa in the lower portion of the measured section and 2 taxa in the upper portion of the measured section. The Jarzen et al. [7] samples, thought to be from just above the measured section, had somewhat higher diversity than those from the lower portion of the measured section. Samples from the Bouie River site (Fig. 4) exhibited similar low diversity.

## Paleoecology

Most taxa recovered from the Clarkia Konservat-Lagerstätte are wood saprophytes (Supplementary Materials, SI2 and SI3). All trophic modes are represented except keratinophytic, animal parasitic, and nematophagous. Fungi recovered are largely indicative of freshwater terrestrial environments that are variably submerged or subaerial. Examination of fungal guild structure is limited by 2



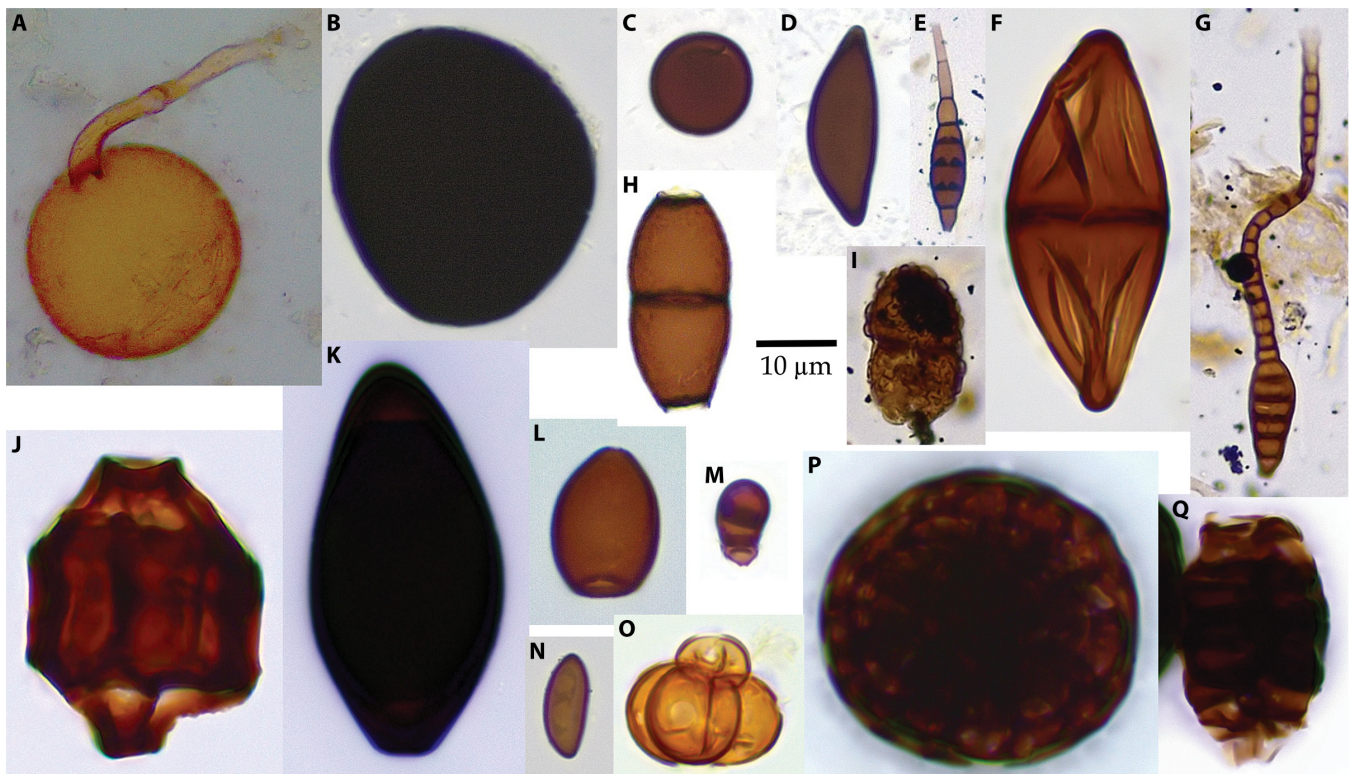
**Fig. 1.** Fungal study site ages and location. (A) Age of the 3 study sites plotted in relation to the  $\delta^{18}\text{O}$  “mega-splice” [2]. (B) Location of the 3 study sites within the United States. Blue shaded zone indicates Middle Miocene Climatic Transition (MMCT), while pink shaded zone indicates Miocene Climate Optimum (MCO).



**Fig. 2.** Fungal palynomorphs recovered from the Clarkia Konservat-Lagerstätte. (A) cf. *Bombardioidea*. (B) cf. Sordariales. (C) cf. *Brachydesmiella*. (D) cf. *Melanographium*. (E) *Sphaerodes*. (F) cf. *Cercophora*. (G) cf. *Polytretophora*. (H) *Hughesinia*. (I) cf. *Acrogenospora*. (J) cf. Apiosporaceae. (K) Xylariaceae. (L) cf. *Rosellinia*. (M) *Chaetomium*. (N) *Acarocybiopsis*. (O) *Endophragma*. (P) *Bispora*. (Q) cf. *Didymosphaeria*. (R) *Neorousoella*. (S) cf. *Lemkea*. (T) cf. *Catenularia*. (U) *Endophragmiella*. (V) *Desertella*. (W) *Bactrodesmium*. (X) *Spadicoides* sp. 1. (Y) *Spadicoides* sp. 2. (Z) *Podospora*. (AA) *Minutisphaera*. (BB) *Pendulispora*. (CC) *Phragmocephala*. (DD) *Diporothea* aff. *rhizophila*. (EE) *Melanocephala*. (FF) *Seychellomyces*. (GG) *Trichocladium*. (HH) *Brachysporiella*. (II) *Bactrodesmium* aff. *abruptum*. (JJ) *Endophragmiopsis*. (KK) *Naviculispora*. (LL) *Dictyocheirospora*. (MM) *Helensiella*. (NN) cf. *Helicoon*. (OO) cf. *Hermatomyces*. Scale bar, 10  $\mu$ m.

factors: (a) nonrecovery of very fragile and hyaline fungal spores and (b) the large number of taxa that could not be confidently assigned to a modern analog within each sample. To largely circumvent these challenges, only those samples that contained

greater than 10 identified fungi were included in the analysis for Clarkia and subsequent settings. In this limited subset, 3 variations in guild structure were noted: (a) saprotroph dominated with near-equal numbers of dark septate endophytes (DSEs) and unknowns,



**Fig. 3.** Fungal palynomorphs recovered from Alum Bluff. (A) Glomeromycota. (B) *Acrogenospora*. (C) Apiosporaceae. (D) *Rosellinia*. (E) *Elegantimyces*. (F) *Atrotorquata* aff. *lineata*. (G) *Sporidesmium*. (H) *Savoryella* aff. *lignicola*. (I) *Minutisphaera*. (J) *Sphaerodes*. (K) cf. *Kionocephala*. (L) *Cercophora*. (M) *Spadicoides*. (N) Xylariales. (O) *Thecaphora*. (P) cf. *Hermatomyces*. (Q) *Canalisporium*. Scale bar, 10  $\mu$ m.

and a greater number of pathogenic fungi (Supplementary Materials, SI4); (b) saprotroph-unknown co-dominated; and (c) saprotroph-unknown co-dominated with DSEs and pathogenic fungi present. Wood saprophytes are also common in sediments from Alum Bluff (Supplementary Materials, SI2 and SI3), and keratinophytic, hyperparasitic, and nematophagous modes are absent. Fungi recovered are generally indicative of freshwater conditions, although marine and/or brackish water elements are present at various points in the column (e.g., samples 43592, 1499, 1495, 1486, and 1482). Fungal guild structure reconstructions are not possible for Alum Bluff due to low taxonomic diversity in individual samples. The Bouie River site is especially challenging to characterize as very few samples contain many identifiable fungi (Supplementary Materials, SI2 and SI3). That said, the only trophic mode not present in the fungus from the Bouie River site is nematophagous. Marine/Brackish water elements are more likely in the lower third of the section than elsewhere. Only one sample (1516) could be analyzed for guild structure. The fungus present in this sample is remarkably similar to the third type noted above for Clarkia (Supplementary Materials, SI4).

## Paleoclimatology

### Köppen-Geiger classes

Köppen-Geiger class reconstructions using fungi are noisy where primarily cosmopolitan taxa are present [4]. This is the case for large parts of the reconstructions from the Clarkia Konservat-Lagerstätte, the Alum Bluff site, and the Bouie River site (Supplementary Materials, SI4).

In the Clarkia Konservat-Lagerstätte (Fig. 5), the fungal-indicated Köppen-Geiger class at the time of lake initiation at P-33 (sample 1501) is temperate with no dry season and warm

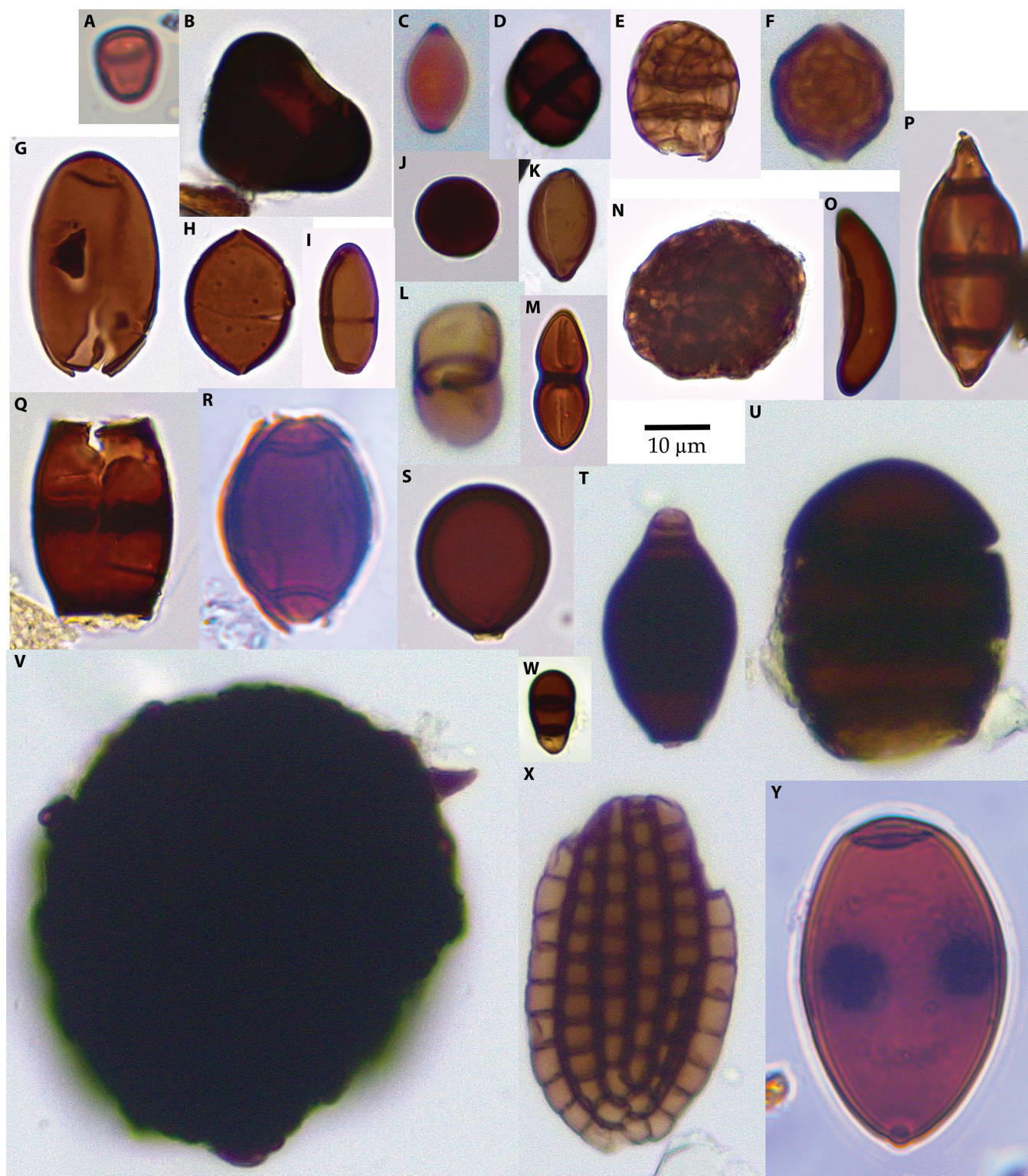
summers (Cfb). While noisy, the next 3 m records a transition to temperate with dry winters and hot summers (Cwa). A brief return to Cfb conditions is seen 2 m above this before reverting to Cwa. At 11 m, a temperate with no dry season and hot summers (Cfa) climate is indicated, largely due to the presence of *Brachyporiella* aff. *setosa*, before a return to Cwa conditions. The entirety of site P-37, where single Köppen-Geiger classes could be reconstructed, was likely deposited under Cwa conditions.

In stratigraphically ordered samples from the Alum Bluff site (Fig. 5), no single Köppen-Geiger class can be clearly reconstructed from the fungi. The most constrained reconstruct tropical rainforest, monsoonal, or savannah with dry winters (Af, Am, Aw) or Aw to temperate with dry winter and hot summer (Cwa) conditions. The lowermost 5 productive samples may record a transition from primarily tropical to primarily warm temperate conditions. While the remaining samples in the stratigraphic section are noisy, they consistently reconstruct Am and Aw climates, suggesting a return to tropical conditions. In the Jarzen et al. [7] samples, treated as being from similar horizons above the measured section, reconstructions range from Af or Am to mixed Aw and Cfb to Cfa or Cwa conditions.

At the Bouie River site (Fig. 5), the fungal-indicated Köppen-Geiger classes range from Cfb (1506, 1508) to Cwa (1512, 1514, 1516), mixed Cwa and Cfb at 1.3 m (1526), and mixed Af and Cfa at 2.2 m (1542), suggesting that subtropical wet conditions predominated.

### Paleobotany-based reconstructions using *crestr*

Our new plant-based paleoclimate-defined Köppen-Geiger classifications show that Bouie River and Alum Bluff supported a flora in a Cfa (temperate, no dry season, hot summer) class, whereas



**Fig. 4.** Fungal palynomorphs recovered from the Bouie River site. (A) *cf. Catenularia*. (B) *Zopfiella aff. neogenica*. (C) *cf. Cercophora*. (D) *Spegazzinia*  $\beta$ -type. (E) *cf. Bahugada*. (F) *Sphaerodes*. (G) Sordariales. (H) *Chaetomium*. (I) *cf. Naviculispora*. (J) Apiosporaceae. (K) Xylariales. (L) *cf. Asterina*. (M) *cf. Delitschia*. (N) *cf. Berkleasmium*. (O) *cf. Rosellinia*. (P) *cf. Caryospora*. (Q) *cf. Endophragmiella*. (R) *cf. Diporothea*. (S) *cf. Acrogenospora*. (T) *cf. Heteroconium*. (U) *cf. Melanocephala*. (V) *Termitariopsis*. (W) *cf. Bactrodesmium*. (X) *cf. Dictyosporium*. (Y) *Potamomyces*. Scale bar, 10  $\mu$ m.

Clarkia and Trapper Creek were reconstructed as Cfb (temperate, no dry season, hot summer) and Dsb (cold, dry summer, warm summer) classes, respectively (Fig. 6; Supplementary Materials, SI5). These reconstructions show a clear climatic cooling and

increase in seasonality between the 42°N to 47°N MCO Clarkia and post-MMCT Trapper Creek. This cooling was on the order of 3.65 °C for mean annual temperature (MAT) and summer temperature and 2.25 °C in winter (Supplementary Materials, SI5).

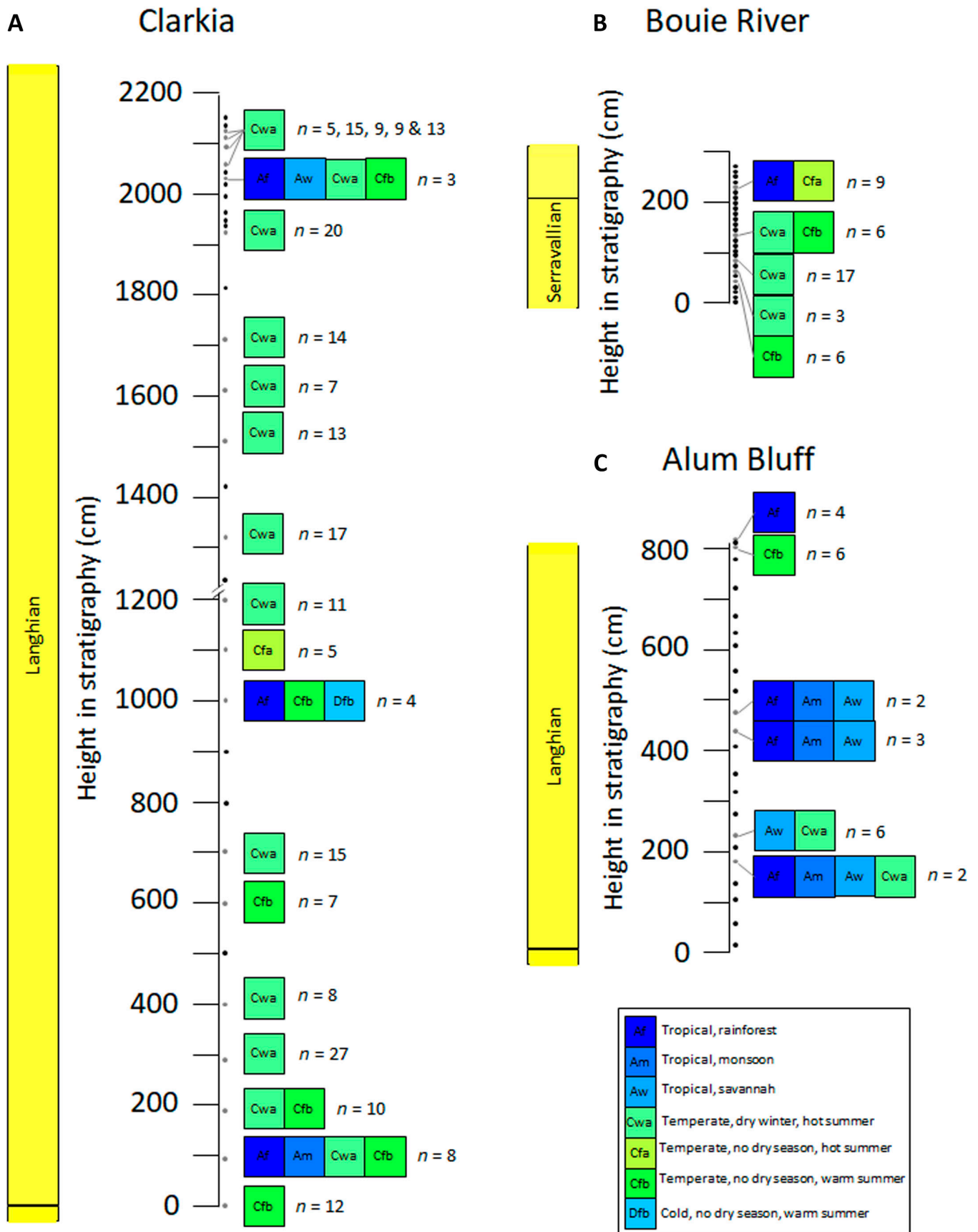


Fig. 5. Funga-based Köppen-Geiger climate class reconstructions for (A) Clarkia, (B) Bouie River, and (C) Alum Bluff.

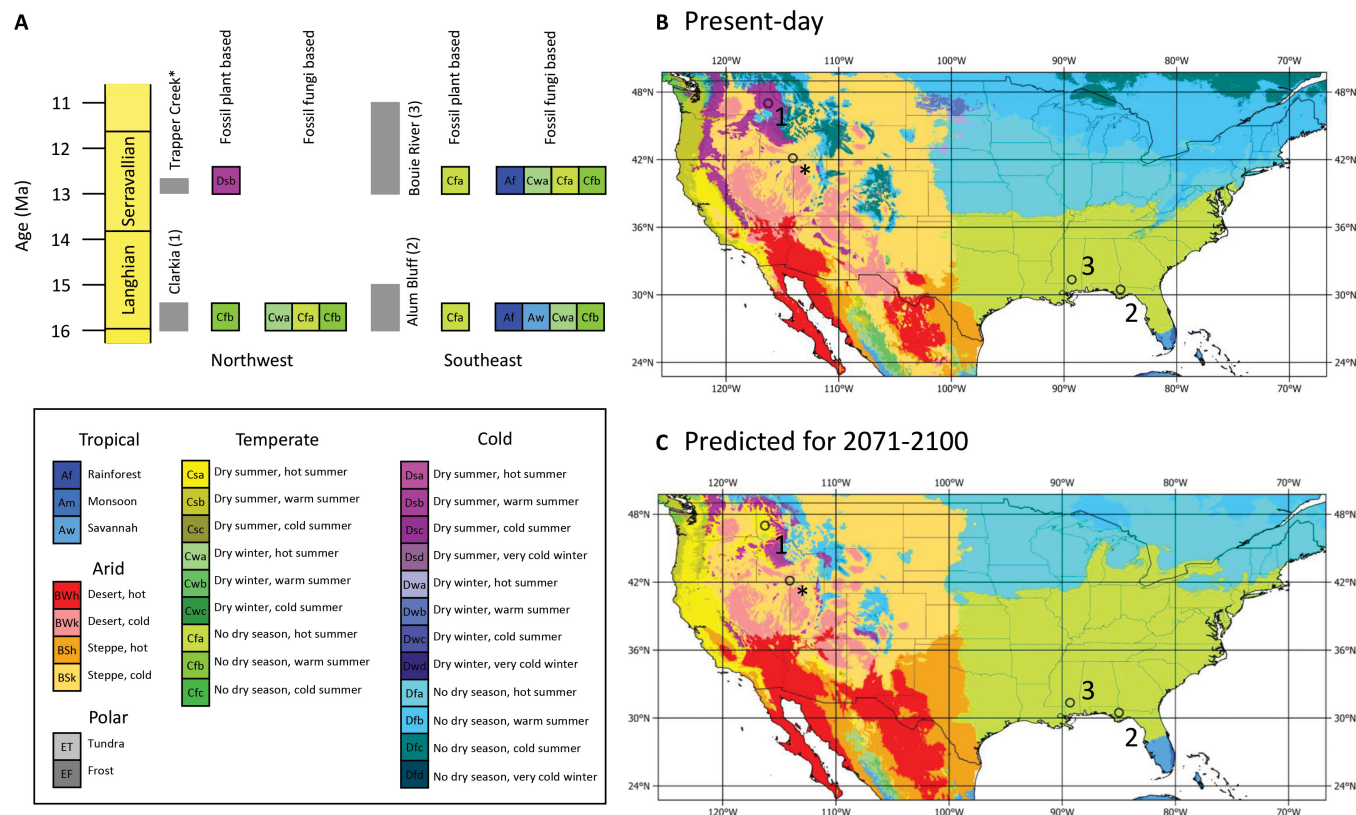
Although the Köppen-Geiger class of Alum Bluff and Bouie River are the same, a 1.15 °C drop in MAT and a 2.35 °C decrease in winter temperature are reconstructed (Supplementary Materials, SI5). All new reconstructions are comparable to previously published estimates (Supplementary Materials, SI6).

### Discussion

The MCO has been considered an analog for future climate change [1]. Here, we compare our new results to predictions for end-21st century Köppen-Geiger climate class distribution. In North America, the distribution of Köppen-Geiger classes largely follows the “dry gets drier, wet gets wetter” paradigm that assumes that higher temperatures will exaggerate contemporary hydrological conditions, which has been shown to be an invalid assumption for over 70% of land areas [17]. For the warmer-than-present MCO, our results show wetter conditions, with fossil fungi showing a summer-wet hydrological regime (Fig. 6). A summer-wet regime characterizes many present-day monsoon regions, including the North American Monsoon [18]. Presently, the North American Monsoon only delivers infrequent heavy rainfall events to the southern United States during summer and is projected to change by ±5% with contemporary CO<sub>2</sub> increase [18,19]. This is supported by middle Miocene climate modeling that showed a weaker North American Monsoon [20]. Atmospheric rivers are projected to increase winter rainfall across western North America with future climate change [21]. This may be a causal mechanism for the winter-wet climate reconstructed for Trapper Creek during the Serravallian, but not the aseasonal (plant-based) or summer-wet (fungal-based) climate reconstructed for MCO Clarkia (Fig.

6). Increased mean annual precipitation is a consistent feature of the MioMIP1 multi-model ensemble in western North America and increases in geographic area with increasing atmospheric CO<sub>2</sub>; however, it is currently unknown how this responds seasonally [20]. Additionally, uplift of the Cascade Range and portions of the Rocky Mountains in the middle to late Miocene has fundamentally changed the hydrologic regime in what is now north-central Idaho [22], and mid-Miocene climate reconstructions are unlikely to fully reflect the impact of future warming scenarios for this region. Our reconstructed post-MCO cooling in the northwest is greater than that reported in Greenwood et al. [23]. Taggart and Cross [13] proposed Trapper Creek as a cold conifer forest, which is supported by our Köppen-Geiger reconstruction. In southeast North America, the plant-based paleoclimate reconstruction shows the presence of the same Köppen-Geiger classification as today (Fig. 6), and that which is predicted to be present to the end of the 21st century and is consistent with other palaeobotanical reconstructions for these sites [3]. The fungal-based reconstructions are more uncertain due to poorer preservation, but also point to a warmer and potentially wetter climate during the middle Miocene. This is supported by climate model studies, although this is also a region with high model disagreement for the hydrologic response [20].

Reconstructions based on fungi and plants, while in this case complementary, are fundamentally completed at different scales and focused on different aspects of the system. Macropaleobotany-based reconstructions are, by nature of the defined assemblages, time-averaged, as they represent accumulation across much broader stratigraphic intervals than microfossil-based reconstructions [24]. Plant palynology data, with few



**Fig. 6.** Comparison of (A) fossil plant and fossil funga-based Köppen-Geiger climate class reconstructions with (B) present-day distributions of Köppen-Geiger climate classes and (C) Köppen-Geiger climate class distributions predicted for 2071–2100 in the contiguous United States ([36]; Supplementary Materials, SI5).

exceptions, reconstructs a regional signal [24] due to admixture of long-transport and local pollen sources. Fungal palynology, due to the relatively small dispersal distance of most fungi (millimeters to meters), provides a highly local signal in endorheic lakes and peat-producing settings [25,26]. While transport distances can be greater in alluvial-fluvial settings, the signal remains more localized than that of anemophilous pollen. Additionally, the taphonomy of fungi differs from that of both leaves and plant pollen and spores due to the chemistry of the setting and the chemistry of the fungal palynomorphs. Melanized fungal remains are more resistant to degradation by both bacteria and other fungi [27,28], and are thus more likely to be preserved in the fossil record. Darkening of weakly melanized fungal spores is known to occur through a variety of mechanisms [27] and to vary with thermal maturity [29]. All samples examined in this study are thermally immature; therefore, that factor can be discounted. Beyond mere preservation, the nature of fungal palynomorphs as a biological entity is very different from plant palynomorphs. Plant palynomorphs that fall on the ground are reproductively sterile—they will not progress further along their life cycles and are largely preserved as whole organs. Fungal palynomorphs, however, represent fungal necromass—for whatever reason, conditions were inhospitable for continuance of the fungal life cycle [25]. We, therefore, expect to see more limited and highly localized assemblages in the fossil record. Thus, we are comparing a taphonomically distinct local signal to a regional and/or time-averaged signal when comparing fungi-based to plant-based reconstructions.

## Conclusions

Three hundred fifty-one fungal morphotypes were recorded from Miocene sections in North America, 83 of which were identified as extant forms, and 41 of which were not previously known from the Miocene. While recovery varied from very good (Clarkia) to sparse (Alum Bluff), the recovered fungus permitted interpretation of both paleoecology and paleoclimate.

Fungus recovered from Miocene-aged sediments from Clarkia, Idaho, Alum Bluff, Florida, and the Bouie River site, Mississippi, complement plant-based paleoclimate reconstructions. At Clarkia, the MCO fungal-reconstructed Köppen-Geiger classes fluctuate from a dominant Cwa to Cfa and Cfb, showing a warm-temperate to temperate climate with dry winters or no dry season that is consistent with the fossil pollen-based reconstructions. Following the MCO, fossil plant reconstructions show a cooling to a cold climate with a dry and warm summer (Dsb), indicating a hydrological shift in response to either global cooling, regional uplift, or a combination of the 2. In southeastern North America, the fungal-based reconstructions are hampered by poor preservation but still produce results consistent with paleobotany. At Alum Bluff, the reconstruction ranges from seasonal tropical/subtropical (Aw/Cwa) to aseasonal tropical (Af) leading up to and during the MCO, and Af/Cfa/Cwa/Cfb for the Bouie River site following the MCO. The numerical paleobotanical reconstructions show a 6 °C MAT cooling in Idaho (42°N to 46°N) and 1 °C cooling in the southeast (30°N to 31°N) from the MMCT. Overall, these fungal-based results are consistent with paleobotanical reconstructions and show a wetter middle Miocene in North America. This provides further geological evidence that contradicts the “wet gets wetter, dry gets drier” paradigm of elevated global temperatures.

## Materials and Methods

### Sample collection and palynological processing

Samples were collected from freshly excavated vertical trenches. At Clarkia and Alum Bluff, individual samples were obtained in 2.5-cm-diameter 15-cm-long sterile polyvinyl chloride tubes pounded into the exposure; in cases where this was not feasible, a stainless-steel grain scoop of similar depth was used to obtain samples. At the Bouie River site, rising water levels dictated collection of pillar samples from a step trench. The pillar samples were subsampled for study upon return to the laboratory. All samples were dried in a 50 °C oven and crushed to –1 mm prior to processing. Processing followed hydrofluoric acid (HF)-free protocols outlined by O’Keefe and Eble [30] and Pound et al. [31], except for select samples from Alum Bluff, which were treated with multiple rounds of microwave-assisted HF digestion following HCl treatment to remove carbonates.

### Fungal palynology

Microscopy and image collection followed the methods of Romero et al. [6]. Images were sorted into OneNote files based on palynomorph morphology, and taxonomic identifications were completed using the morphometric methods of Pound et al. [4] as well as comparisons with materials from The Fungarium at Royal Botanic Gardens Kew (Supplementary Materials, SI2). Unidentified specimens were assigned the prefix OPaL (the paleoecology laboratory at Morehead State University) and a number, following the recommendations of O’Keefe et al. [32] and Miola [33] to avoid increasing taxonomic instability caused by giving a likely extant organism a fossil name. Occurrence data were tabulated; counts were not performed following the recommendations of Perrotti et al. [34] and Nuñez Otaño et al. [25]. Fungal traits and geographic distributions were determined following the methods of Pound et al. [4] in April 2023 (Supplementary Materials, SI3). Fungal Guild assignments were made via r-script query of FUNGuild [35] in March of 2024; for those taxa not listed in FUNGuild, the primary literature was consulted to derive guild assignments (Supplementary Materials, SI4). Qualitative paleoclimate reconstructions of Köppen-Geiger climate systems were reconstructed using the methods of Pound et al. [4]; the qualitative analysis was chosen because the present-day distributions of fungi are not as well documented as plants.

### Plant-based paleoclimate reconstructions

The probabilistic paleoclimate reconstruction model Climate Reconstruction Software (crestr) was used to define Köppen-Geiger classifications from the fossil plant assemblages of all sites (Fig. 1) [36,37]. Crestr was run in R Studio 2023.03.0+386 (Posit team 2023) following the recommended parameterization of Chevalier [37], and the resulting optima were used to define Köppen-Geiger classifications following Belda et al. [38] and Beck et al. [36]. Full results with 0.5 and 0.95 uncertainties, comparison with previously published paleoclimate reconstructions, supporting references, and links to the crestr script are available in the Supplementary Materials (SI5 and SI6).

### Acknowledgments

We thank C. Oliver (The Nature Conservancy, Florida) for his supervision of fieldwork and suggestions regarding site access. We also thank D. Jarzen (Cleveland Museum, retired) and S. Manchester and H. Wang (Florida Museum of Natural History)

for conversations about and loan of their Alum Bluff palynological slides. The Morehead State-based team thank W. (B.) Rember for housing, access to P37, and many excellent discussions about the depositional history and paleobotany of the sites. We thank K., R., and K. Kienbaum for site clean-up and excavation endeavors at P37 (Rember homestead) and for access to and excavation endeavors at P33 (racetrack site). This project would have been impossible without the support of the Morehead State University Travel Office, the Office of Environmental Health and Safety, and the Interlibrary Loan Department at the Camden-Carroll Library, especially S. Scott. We also thank S. Stukins for access to the John Williams Index of Palaeopalynology (JWIP) at the Natural History Museum, London, and S. (L.) Chowdhury for access to specimens at the Kew Fungarium, UK, photographs, measurements, and descriptions of which were used for comparative study with materials obtained from the study sites. Study of the Alum Bluff site was facilitated by the Nature Conservancy under permit #ABRP2101.

**Funding:** The efforts of J.F., L.F.S., L.T., and O.L.V. were supported by Morehead State University Undergraduate Research Fellowships. Field travel was in part supported by the Richard A. Walls Geological Research Fund through the Morehead State University Foundation. The Fungi in a Warmer World (FiaWW) project was jointly funded by NSF/Geo and NERC under NSF award #2015813 to J.M.K.O. and NERC award identifier NE/V01501X/1 to M.J.P.

**Author contributions:** J.M.K.O. and M.J.P. conceived the idea for the study and determined study sites. J.M.K.O., T.M.S., I.C.R., J.E.L.-S., W.C.R., J.E.S., M.E.A., and A.B. completed fieldwork at the 3 sites. C.J.F. and T.M.S. completed undergraduate theses on aspects of material from the Clarkia and Bouie River sites, respectively, under the guidance of J.M.K.O. and I.C.R. C.F.E. processed samples from Alum Bluff. M.E.A., C.J.F., J.F., T.H., S.J., J.E.L.-S., C.A.M., A.A.P., T.M.S., L.T., L.F.S., O.L.V., J.M.K.O., and I.C.R. completed documentation of fungi from Clarkia, Alum Bluff, and Bouie River. N.B.N.O., I.C.R., and J.M.K.O. identified the fungi. M.E.A., C.J.F., and J.M.K.O. completed initial climatological and assemblage analyses. E.H., J.F., J.M., M.J.P., and J.M.K.O. compiled ecological and climatological data for fungi encountered. M.E.A., J.M.K.O., and M.J.P. constructed the figures/plates. M.J.P. completed fungi-based climate reconstructions. M.J.P., J.M., and M.E.G. completed plant-based climate reconstruction modeling. J.M.K.O. and M.J.P. jointly authored the initial draft of the paper and completed the final manuscript following co-author review. All co-authors contributed to editing the paper draft prior to submission.

**Competing interests:** The authors declare that they have no competing interests.

## Data Availability

All data are available within the Supplementary Materials.

## Supplementary Materials

SI1 to SI6

References [39–107]

## References

- Steinthorsdottir M, Coxall HK, de Boer AM, Huber M, Barbolini N, Bradshaw CD, Burls NJ, Feakins SJ, Gasson E, Henderiks J, et al. The Miocene: The future of the past. *Paleoceanogr Paleoclimatol.* 2021;36:e2020PA004037.
- De Vleeschouwer D, Vahlenkamp M, Crucifix M, Pälike H. Alternating Southern and Northern Hemisphere climate response to astronomical forcing during the past 35 my. *Geology.* 2017;45(4):375–378.
- Reichgelt T, Baumgartner A, Feng R, Willard DA. Poleward amplification, seasonal rainfall and forest heterogeneity in the Miocene of the eastern USA. *Glob Planet Chang.* 2023;222:Article 104073.
- Pound MJ, Nunez Otano NB, Romero IC, Lim M, Riding JB, O’Keefe JMK. The fungal ecology of the Brassington Formation (Middle Miocene) of Derbyshire, United Kingdom, and a new method for palaeoclimate reconstruction. *Front Ecol Evol.* 2022;10:Article 947623.
- Větrovský T, Kohout P, Kopecký M, Machac A, Man M, Bahnmann BD, Brabcová V, Choi J, Meszárošová L, Human ZR, et al. A meta-analysis of global fungal distribution reveals climate-driven patterns. *Nat Commun.* 2019;10(1):5142.
- Romero IC, Nuñez Otaño NB, Gibson ME, Spears TM, Fairchild CJ, Tarlton L, Jones S, Belkin HE, Warny S, Pound MJ, et al. First record of fungal diversity in the tropical and warm-temperate Middle Miocene Climate Optimum forests of Eurasia. *Front. For Glob Change.* 2021;4:Article 768405.
- Jarzen D, Corbett S, Manchester S. Palynology and paleoecology of the Middle Miocene Alum Bluff Flora, Liberty County, Florida, USA. *Palynology.* 2010;34(2):261–286.
- Pipis SA. Regional effects of ash bed RA-3 on the Miocene Clarkia Formation [dissertation]. [Moscow (ID)]: University of Idaho; 2012.
- Smiley CJ, Rember WJ. Physical setting of the Miocene Clarkia fossil beds, northern Idaho. In: Smiley CJ, editor. *Late Cenozoic history of the Pacific Northwest.* San Francisco (CA): Pacific Division of the American Association for the Advancement of Science; 1985. p. 11–31.
- Smiley CJ, Rember WJ. Composition of the Miocene Clarkia flora. In: Smiley CJ, editor. *Late Cenozoic history of the Pacific Northwest.* San Francisco (CA): Pacific Division of the American Association for the Advancement of Science; 1985. p. 95–112.
- McNair D, Stults DZ, Axsmith B, Alford MH, Starnes JE. Preliminary investigation of a diverse megafossil floral assemblage from the middle Miocene of southern Mississippi, USA. *Palaeontol Electron.* 2019;22.2.40A:1–29.
- Baghai-Riding NL, Axsmith B, Davis K, Allison R. Implications of a palynology sample from Bowie River, Mississippi. *Botany.* 2017.
- Taggart RE, Cross AT. Plant successions and interpretations in Miocene volcanic deposits, Pacific Northwest. In: Lockley MG, Rice A, editors. *Volcanism and fossil biotas.* Boulder (CO): Geological Society of America Special Papers; 1990. p. 57–68.
- Sherwood-Pike M, Gray J. Fossil leaf-inhabiting fungi from northern Idaho and their ecological significance. *Mycologia.* 1988;80(1):14–22.
- Sherwood-Pike MA. Freshwater fungi: Fossil record and paleoecological potential. *Palaeogeogr Palaeoclimatol Palaeoecol.* 1988;62(1–4):271–285.
- Phipps CJ, Rember WC. Epiphyllous fungi from the Miocene of Clarkia, Idaho: Reproductive structures. *Rev Palaeobot Palynol.* 2004;129(1–2):67–79.

17. Greve P, Orlowsky B, Mueller B, Sheffield J, Reichstein M, Seneviratne SI. Global assessment of trends in wetting and drying over land. *Nat Geosci.* 2014;7(10):716–721.
18. Pascale S, Carvalho LM, Adams DK, Castro CL, Cavalcanti IF. Current and future variations of the monsoons of the Americas in a warming climate. *Curr Clim Chang Rep.* 2019;5:125–144.
19. Colorado-Ruiz G, Cavazos T, Salinas JA, De Grau P, Ayala R. Climate change projections from Coupled Model Intercomparison Project phase 5 multi-model weighted ensembles for Mexico, the north American monsoon, and the mid-summer drought region. *Int J Climatol.* 2018;38(15):5699–5716.
20. Acosta RP, Burls NJ, Pound MJ, Bradshaw CD, De Boer AM, Herold N, Huber M, Liu X, Donnadiou Y, Farnsworth A, et al. A model-data comparison of the hydrological response to Miocene warmth: Leveraging the MioMIP1 opportunistic multi-model ensemble. *Paleoceanogr Paleoclimatol.* 2024;39(1):e2023PA004726.
21. Gershunov A, Shulgina T, Clemesha RE, Guirguis K, Pierce DW, Dettinger MD, Lavers DA, Cayan DR, Polade SD, Kalansky J, et al. Precipitation regime change in Western North America: The role of atmospheric rivers. *Sci Rep.* 2019;9(1):9944.
22. Zhou Q, Liu L. Topographic evolution of the western United States since the early Miocene. *Earth Planet Sci Lett.* 2019;514:1–12.
23. Greenwood DR, West CK, Basinger JF. The Miocene Red Lake macroflora of the Deadman River Formation (Chilcotin Group), Interior Plateau, British Columbia, Canada. *Acta Palaeobot.* 2020;60(2):213–250.
24. Ferguson DK. Plant taphonomy: Ruminations on the past, the present, and the future. *Palaios.* 2005;20(5):418–428.
25. Nuñez Otaño NBN, Bianchinotti MV, Saparrat MC. Palaeomycology: A modern mycological view of fungal palynomorphs. In: Marret F, O’Keefe J, Osterloff P, Pound M, Shumilovskikh L, editors. *Applications of non-pollen palynomorphs: From palaeoenvironmental reconstructions to biostratigraphy.* London: Geological Society; 2021. p. 91–120.
26. Shumilovskikh L, O’Keefe JMK, Marret F. An overview of the taxonomic groups of non-pollen palynomorphs. In: Marret F, O’Keefe J, Osterloff P, Pound M, Shumilovskikh L, editors. *Applications of non-pollen palynomorphs: From palaeoenvironmental reconstructions to biostratigraphy.* London: Geological Society; 2021. p. 13–61.
27. Nuñez Otaño NB, Bianchinotti MV, Romero IC, Perez PE, Saxena RK, MCN S. Fossil Tetraploa redefinition and potential contribution of dark pigments for the preservation of its spores in the fossil record. *Mycosphere.* 2022;13:188–206.
28. Maillard F, Michaud TJ, See CR, DeLancey LC, Blazewicz SJ, Kimbrel JA, Pett-Ridge J, Kennedy PG. Melanization slows the rapid movement of fungal necromass carbon and nitrogen into both bacterial and fungal decomposer communities and soils. *mSystems.* 2023;8(4):e00390–e00323.
29. Dai S, Bartley R, Bartley S, Valentim B, Guedes A, O’Keefe JMK, Kus J, Mastalerz M, Hower JC. Organic geochemistry of funginite (Miocene, Eel River, Mendocino County, California, USA) and macrinite (Cretaceous, Inner Mongolia, China). *Int J Coal Geol.* 2017;179:60–71.
30. O’Keefe JMK, Eble CF. A comparison of HF-based and non-HF-based palynology processing techniques in clay-rich lignites from the Claiborne Group, upper Mississippi Embayment, United States. *Palynology.* 2012;36(1):116–130.
31. Pound MJ, O’Keefe JMK, Marret F. An overview of techniques applied to the extraction of non-pollen palynomorphs, their known taphonomic issues and recommendations to maximize recovery. In: Marret F, O’Keefe J, Osterloff P, Pound M, Shumilovskikh L, editors. *Applications of non-pollen palynomorphs: From palaeoenvironmental reconstructions to biostratigraphy.* London: Geological Society; 2021. p. 63–76.
32. O’Keefe JMK, Nuñez Otaño NB, Bianchinotti MV. Nomenclature: How do we designate NPP taxa? In: Marret F, O’Keefe J, Osterloff P, Pound M, Shumilovskikh L, editors. *Applications of non-pollen palynomorphs: From palaeoenvironmental reconstructions to biostratigraphy.* London: Geological Society; 2021. p. 77–89.
33. Miola A. Tools for non-pollen palynomorphs (NPPs) analysis: A list of quaternary NPP types and reference literature in English language (1972–2011). *Rev Palaeobot Palynol.* 2012;186:142–161.
34. Perrotti AG, Ramiadantsoa T, O’Keefe J, Nuñez ON. Uncertainty in coprophilous fungal spore concentration estimates. *Front Ecol Evol.* 2022;10:1086109.
35. Nguyen NH, Song Z, Bates ST, Branco S, Tedersoo L, Menke J, Schilling JS, Kennedy PG. FUNGuild: An open annotation tool for parsing fungal community datasets by ecological guild. *Fungal Ecol.* 2016;20:241–248.
36. Beck HE, Zimmermann NE, McVicar TR, Vergopolan N, Berg A, Wood EF. Present and future Köppen–Geiger climate classification maps at 1-km resolution. *Sci Data.* 2018;5:Article 180214.
37. Chevalier M. crestr: An R package to perform probabilistic climate reconstructions from palaeoecological datasets. *Clim Past.* 2022;18(4):821–844.
38. Belda M, Holtanová E, Halenka T, Kalvová J. Climate classification revisited: From Köppen to Trewartha. *Clim Res.* 2014;59(1):1–13.
39. Gee CT, Taylor DW, Rember WC. First water lily, a leaf of *Nymphaea* sp., from the Miocene Clarkia flora, northern Idaho, USA: Occurrence, taphonomic observations, floristic implications. *Fossil Imprint.* 2022;78(1):288–297.
40. Höfig D, Zhang YG, Giosan L, Leng Q, Liang J, Wu M, Miller B, Yang H. Annually resolved sediments in the classic Clarkia lacustrine deposits (Idaho, USA) during the middle Miocene Climate Optimum. *Geology.* 2021;49(8):916–920.
41. Steinhorsdottir M, Jardine PE, Rember WC. Near-future pCO<sub>2</sub> during the hot Mid Miocene Climatic Optimum. *Paleoceanogr Paleoclimatol.* 2021;36(1):e2020PA003900.
42. Mueller J, Schmitz MD. High-precision U–Pb zircon age calibration of mid-Miocene flora, northern Idaho. Paper presented at: Idaho Conference on Undergraduate Research; 2020; Boise, ID, USA.
43. Kasbohm J, Schoene B. Rapid eruption of the Columbia River flood basalt and correlation with the mid-Miocene climate optimum. *Sci Adv.* 2018;4(9):eaat8223.
44. Pipis SA, Rember WC. Regional climatic effects of a large ash fall on the microfossils of the Miocene Latah Formation. Paper presented at: Annual Meeting of the Geological Society of America; 2013; Denver, CO.
45. Yang H, Smiley CJ, Sprengle KF, Rember WC, Knowles CR. Subsurface evidence for a rapid formation of the Clarkia Miocene lake in northern Idaho. *Northwest Science.* 1995;69:52–59.

46. Rember WC. Stratigraphy and paleobotany of Miocene lake sediments near Clarkia, Idaho [thesis]. [Moscow (ID)]: University of Idaho; 1991.
47. Golenberg EM, Giannasi DE, Clegg MT, Smiley CJ, Durbin M, Henderson D, Zurawski G. Chloroplast DNA sequence from a Miocene Magnolia species. *Nature*. 1990;344(6267):656–658.
48. Soltis PS, Soltis DE, Smiley CJ. An rbcL sequence from a Miocene Taxodium (bald cypress). *Proc Natl Acad Sci USA*. 1992;89(1):449–451.
49. Head MJ, Riding JB, O’Keefe JMK, Jeiter J, Gravendyck J. Comment on Franz et al. 2023: A reinterpretation of the 1.5 billion year old Volyn ‘biota’ of Ukraine, and discussion of the evolution of the eukaryotes. *Biogeosciences*. 2024;21:1773–1789.
50. Lott TA, Manchester SR, Corbett SL. The Miocene flora of Alum Bluff, Liberty County, Florida. *Acta Palaeobot*. 2019;59(1):75–129.
51. Bryant JD, MacFadden BJ, Mueller PA. Improved chronologic resolution of the Hawthorn and the Alum Bluff Groups in northern Florida: Implications for Miocene chronostratigraphy. *Geol Soc Am Bull*. 1992;104:208–218.
52. Corbett SL. The middle Miocene Alum Bluff flora, Liberty County, Florida [thesis]. [Gainesville (FL)]: University of Florida; 2004.
53. Webb SD, Beatty BL, Poinar G Jr. New evidence of Miocene Protoceratidae including a new species from Chiapas, Mexico. *Bull Am Mus Nat Hist*. 2003;13:348–367.
54. Slattery JS, Brown GM, Harries PJ, Sandness AL, Portell RW. Environmental and taphonomic controls on the shell beds and fauna of the Middle Miocene Chipola Formation of Florida, USA. *Palaeogeogr Palaeoclimatol Palaeoecol*. 2023;642:Article 111942.
55. Berry EW. The physical conditions and age indicated by the flora of the Alum Bluff Formation. *U S Geol Surv Prof Pap*. 1916;98:41–59.
56. Tedersoo L, Bahram M, Pölme S, Kõljalg U, Yorou NS, Wijesundera R, Ruiz LV, Vasco-Palacios AM, Thu PQ, Suija A, et al. Global diversity and geography of soil fungi. *Science*. 2014;346(6213):1256688.
57. Cannon PF, Kirk PM. *Fungal families of the world*. Cambridge: Cabi International; 2007.
58. Castañeda Ruiz RF, Gusmão LFP, Abarca GH, Saikawa M. Some hyphomycetes from Brazil. Two new species of Brachydesmiella, two new combinations for Repetophragma, and new records. *Mycotaxon*. 2006;95:261–270.
59. Duncan CG, Eslin WE. Wood-decaying ascomycetes and fungi imperfecti. *Mycologia*. 1966;58(4):642–645.
60. Seehann G, Liese W, Kess B. *List of fungi in soft-rot tissue tests*. Hamburg-Lohbrügge (Germany): Institute für Holzbiologie und Holzschutz, Bundesforschungsanstalt für Forst - und Holzwirtschaft; 1975.
61. Bills GF, Gloer JB, An Z. Coprophilous fungi: Antibiotic discovery and functions in an underexplored arena of microbial defensive mutualism. *Curr Opin Microbiol*. 2013;16(5):549–565.
62. Laszlo I, Serena C, Garcia-Hermoso D, Arabatzis M, Desnos-Ollivier M, Vu D, Cardinali G, Arthur I, Normand A-C, Giraldo A, et al. International Society of Human and Animal Mycology (ISHAM)-ITS reference DNA barcoding database—The quality controlled standard tool for routine identification of human and animal pathogenic fungi. *Med Mycol*. 2015;53(4):313–337.
63. Massimo NC, Nandi Devan MM, Arendt KR, Wilch MH, Riddle JM, Furr SH, Steen C, JM U’R, Sandberg DC, Arnold AE. Fungal endophytes in aboveground tissues of desert plants: Infrequent in culture, but highly diverse and distinctive symbionts. *Microb Ecol*. 2015;70:61–76.
64. Busby PE, Peay KG, Newcombe G. Common foliar fungi of Populus trichocarpa modify Melampsora rust disease severity. *New Phytol*. 2016;209(4):1681–1692.
65. David AS, Seabloom EW, May G. Plant host species and geographic distance affect the structure of aboveground fungal symbiont communities, and environmental filtering affects belowground communities in a coastal dune ecosystem. *Microb Ecol*. 2016;71:912–926.
66. Lawrey JD, Diederich P. <http://www.lichenicolous.net> [accessed 2017 May 24].
67. The American Phytopathological Society Common Names of Plant Diseases. <http://www.apsnet.org/publications/commonnames/Pages/default.aspx>.
68. Goh TK, Hyde KD. *Melanographium palmicolum* sp. nov. from Hong Kong, and a key to the genus. *Mycol Res*. 1997;101(9):1097–1100.
69. Bell A. *Dung fungi: An illustrated guide to coprophilous fungi in New Zealand*. Wellington: Victoria University Press; 1983.
70. Costa IPMW, Assuncao MMC, Lima TEF, Oliveira RJV, Cavalcanti MAQ. Checklist of endophytic fungi from tropical regions. *Mycotaxon*. 2012;119:494.
71. Mandyam K, Fox C, Jumpponen A. Septate endophyte colonization and host responses of grasses and forbs native to a tallgrass prairie. *Mycorrhiza*. 2012;22:109–119.
72. Knapp DG, Pintye A, Kovács GM. The dark side is not fastidious—dark septate endophytic fungi of native and invasive plants of semiarid sandy areas. *PLOS ONE*. 2012;7(2):Article e32570.
73. Whitton SR, McKenzie EH, Hyde KD, Fröhlich J. Microfungi on the Pandanaceae: *Polytretophora macrospora* sp. nov. *Mycoscience*. 2001;42(6):555–558.
74. Schlütz F, Shumilovskikh LS. Non-pollen palynomorphs notes: 1. Type HdV-368 (*Podospora*-type), descriptions of associated species, and the first key to related spore types. *Rev Palaeobot Palynol*. 2017;239:47–54.
75. Tennakoon DS, Kuo CH, Maharachchikumbura SS, Thambugala KM, Gentekaki E, Phillips AJ, Bhat DJ, Wanasinghe DN, de Silva NI, Promputtha I, et al. Taxonomic and phylogenetic contributions to *Celtis formosana*, *Ficus ampelas*, *F. septica*, *Macaranga tanarius* and *Morus australis* leaf litter inhabiting microfungi. *Fungal Divers*. 2021;108(1):1–215.
76. Nawawi A, Kuthubutheen AJ. *Canalisporium*, a new genus of lignicolous hyphomycetes from Malaysia. *Mycotaxon*. 1989;34(2):475–487.
77. Wang RX, Luo ZL, Hyde KD, Bhat DJ, Su XJ, Su HY. New species and records of *Dictyocheirospora* from submerged wood in north-western Yunnan, China. *Mycosphere*. 2016;7(9):1357–1367.
78. Wijayawardene NN, Hyde KD, Rajeshkumar KC, Hawksworth DL, Madrid H, Kirk PM, Braun U, Singh RV, Crous PW, Kukwa M, et al. Notes for genera: Ascomycota. *Fungal Divers*. 2017;86:1–594.
79. Carroll GC, Carroll FE. Studies on the incidence of coniferous needle endophytes in the Pacific Northwest. *Can J Bot*. 1978;56(24):3034–3043.
80. Esslinger TL. *A cumulative checklist for the lichen-forming, lichenicolous and allied fungi of the continental United States*

- and Canada, version 19. Fargo (ND): North Dakota State University; 2014.
81. Purahong W, Wubet T, Lentendu G, Schloter M, Pecyna MJ, Kapturska D, Hofrichter M, Krüger D, Buscot F. Life in leaf litter: Novel insights into community dynamics of bacteria and fungi during litter decomposition. *Mol Ecol*. 2016;25(16):4059–4074.
  82. Liu JK, Phookamsak R, Dai DQ, Tanaka K, Jones EG, Xu JC, Chukeatirote E, Hyde KD. Roussoellaceae, a new pleosporalean family to accommodate the genera *Neoroussoella* gen nov, *Roussoella* and *Roussoellopsis*. *Phytotaxa*. 2014;181(1):1–33.
  83. Redecker D, Schüßler A, Stockinger H, Stürmer SL, Morton JB, Walker C. An evidence-based consensus for the classification of arbuscular mycorrhizal fungi (Glomeromycota). *Mycorrhiza*. 2013;23:515–531.
  84. Mena-Portales J, Hernández-Gutiérrez A, Mercado-Sierra A. *Acarocybiopsis*, a new genus of synnematos hyphomycetes from Cuba. *Mycol Res*. 1999;103(8):1032–1034.
  85. Holubová-Jechová V. Lignicolous Hyphomycetes from Czechoslovakia 2. *Bactrodesmium*. *Folia Geobot Phytotaxonom*. 1972;7(4):407–418.
  86. Raja HA, Stchigel AM, Miller AN, Crane JL, Shearer CA. Hyphomycetes from the Great Smoky Mountains National Park, including three new species. *Fungal Divers*. 2007;26:271–286.
  87. Ellis MB. Dematiaceae Hyphomycetes. VII: *Curvularia*, *Brachysporium* etc. *Mycol Pap*. 1966;106:1–57.
  88. Hughes SJ. Relocation of species of *Endophragmia* auct. With notes on relevant generic names. *N Z J Bot*. 1979;17(2):139–188.
  89. Kirk PM. New or interesting microfungi: XV. Miscellaneous hyphomycetes from the British Isles. *Trans Br Mycol Soc*. 1986;86(3):409–428.
  90. Holubová-Jechová V. Studies on hyphomycetes from Cuba VII. Seven new taxa of dematiaceous hyphomycetes. *Česká Mykologie*. 1988;42:23–30.
  91. Marin-Felix Y, Miller AN, Cano-Lira JF, Guarro J, García D, Stadler M, Huhndorf SM, Stchigel AM. Re-evaluation of the order Sordariales: Delimitation of Lasiosphaeriaceae s. str., and introduction of the new families Diplogelasinosporaceae, Naviculisporaceae, and Schizotheciaceae. *Microorganisms*. 2020;8(9):1430.
  92. Su HY, Udayanga D, Luo ZL, Manamgoda DS, Zhao YC, Yang J, Liu XY, McKenzie EHC, Zhou DQ, Hyde K. Hyphomycetes from aquatic habitats in southern China: Species of *Curvularia* (Pleosporaceae) and *Phragmocephala* (Melanommataceae). *Phytotaxa*. 2015;226(3):201–216.
  93. Arenal F, Platas G, Peláez F. Two new *Preussia* species defined based on morphological and molecular evidence. *Fungal Divers*. 2005;20:1–15.
  94. Qiao M, Zheng H, Zhang Z, Yu Z. *Seychellomyces sinensis* sp. nov. from China. *Mycotaxon*. 2019;134(2):391–398.
  95. Wu W, Zhuang W. *Sporidesmium*, *Endophragmiella* and related genera from China. Fungal Diversity Research Series 15. Chiang Mai (Thailand): The Mushroom Research Center; 2005.
  96. Chevalier M. Enabling possibilities to quantify past climate from fossil assemblages at a global scale. *Glob Planet Chang*. 2019;175:27–35.
  97. Chevalier M, Cheddadi R, Chase BM. CREST (Climate REconstruction SofTware): A probability density function (PDF)-based quantitative climate reconstruction method. *Clim Past*. 2014;10(6):2081–2098.
  98. Fick SE, Hijmans RJ. WorldClim 2: New 1-km spatial resolution climate surfaces for global land areas. *Int J Climatol*. 2017;37(12):4302–4315.
  99. GBIF.org. Pinopsida occurrence data. <https://doi.org/10.15468/dl.x2r7pa> [accessed 2020 September 24].
  100. GBIF.org. Magnoliopsida occurrence data. <https://doi.org/10.15468/dl.ra49dt> [accessed 2020 September 24].
  101. Gray J. Northwest American Tertiary palynology: The emerging picture. In: Cranwell LM, editor. *Ancient Pacific floras: The pollen story*. Honolulu: University of Hawaii Press; 1964. p. 21–30.
  102. Smiley CJ, Gray J, Huggins LM. Preservation of Miocene fossils in unoxidized lake deposits, Clarkia, Idaho; with a section on fossil Insecta by WF Barr and JM Gillespie. *J Paleontol*. 1975;49:833–844.
  103. Smiley CJ, Huggins LM. *Pseudofagus idahoensis*, N. Gen. Et Sp. (Fagaceae) from the Miocene Clarkia Flora of Idaho. *Am J Bot*. 1981;68:741–761.
  104. Pinson JB, Manchester SR, Sessa EB. *Culcita remberi* sp. nov., an understory fern of Cyatheales from the Miocene of northern Idaho. *Int J Plant Sci*. 2018;179(8):635–639.
  105. Smith M, Manchester S. A new species of “gigantic” capsular fruits of Vaccinioideae from the Miocene of Idaho. *Palaeontol Electron*. 2019;22(3):1–7.
  106. Perkins ME, Brown FH, Nash WP, Williams SK, McIntosh W. Sequence, age, and source of silicic fallout tuffs in middle to late Miocene basins of the northern basin and range province. *Geol Soc Am Bull*. 1998;110(3):344–360.
  107. Hobbs KM, Parrish JT. Miocene global change recorded in Columbia River basalt-hosted paleosols. *Geol Soc Am Bull*. 2016;128(9–10):1543–1554.